



PARMENTIER
WOLUVE-SAINT-PIERRE

GROUND FLOOR
Apartment 2

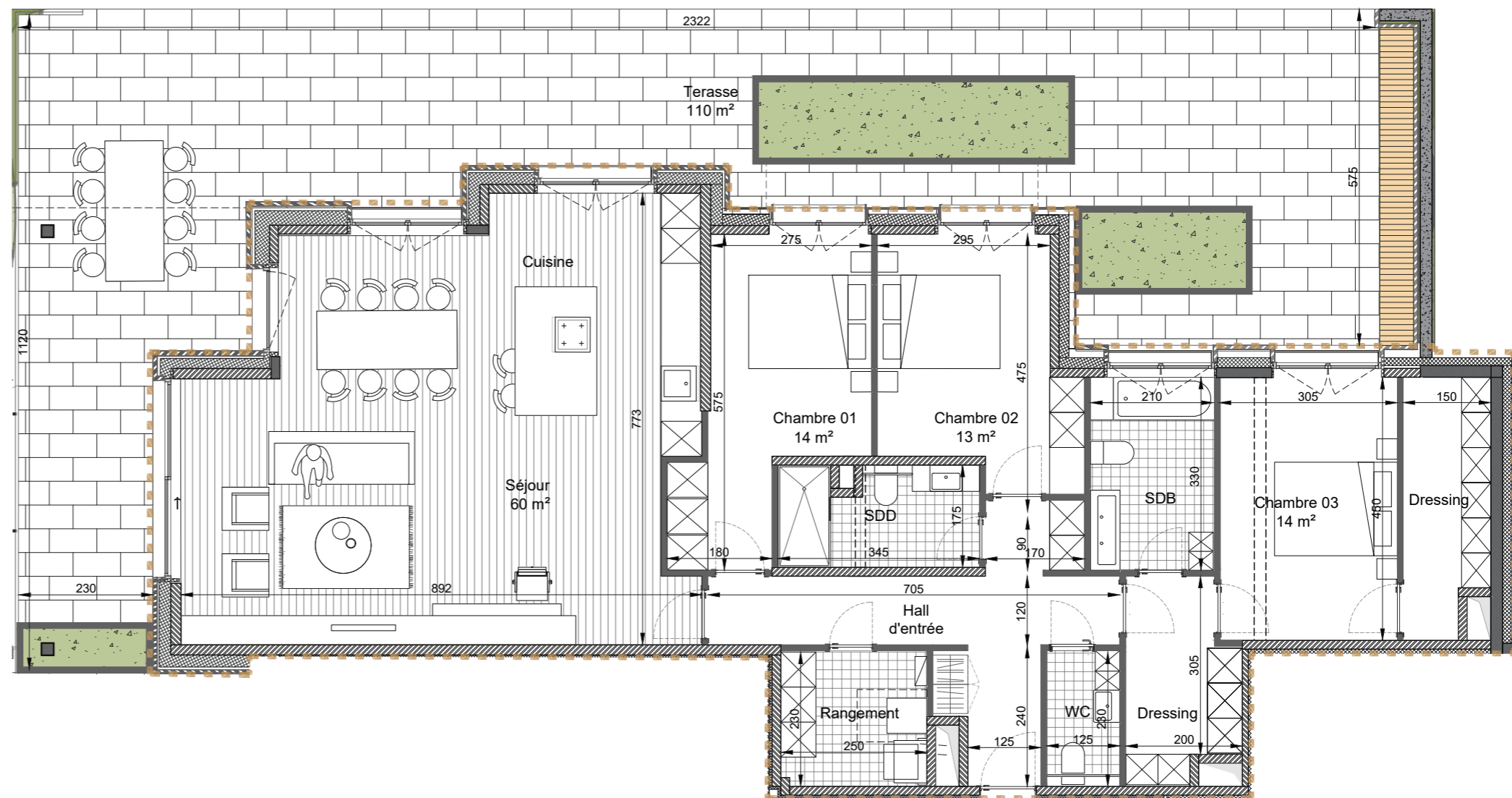
3 bedroom(s)

1 bathroom(s)

181 m² gross area

110 m² gross terrace area

437 m² gross garden area



The dimensions, surfaces, and kitchen and bathroom layouts are purely indicative. The provisions of the specifications take precedence over this sales plan. Indoor surfaces are net areas (LxW). Other surfaces are gross. All furniture and decoration are purely illustrative.



info@ardea.be
www.ardea.be
Steenweg op Leuven 1188, 1200 Sint-Lambrechts-Woluwe