



PARMENTIER  
WOLUVE-SAINT-PIERRE

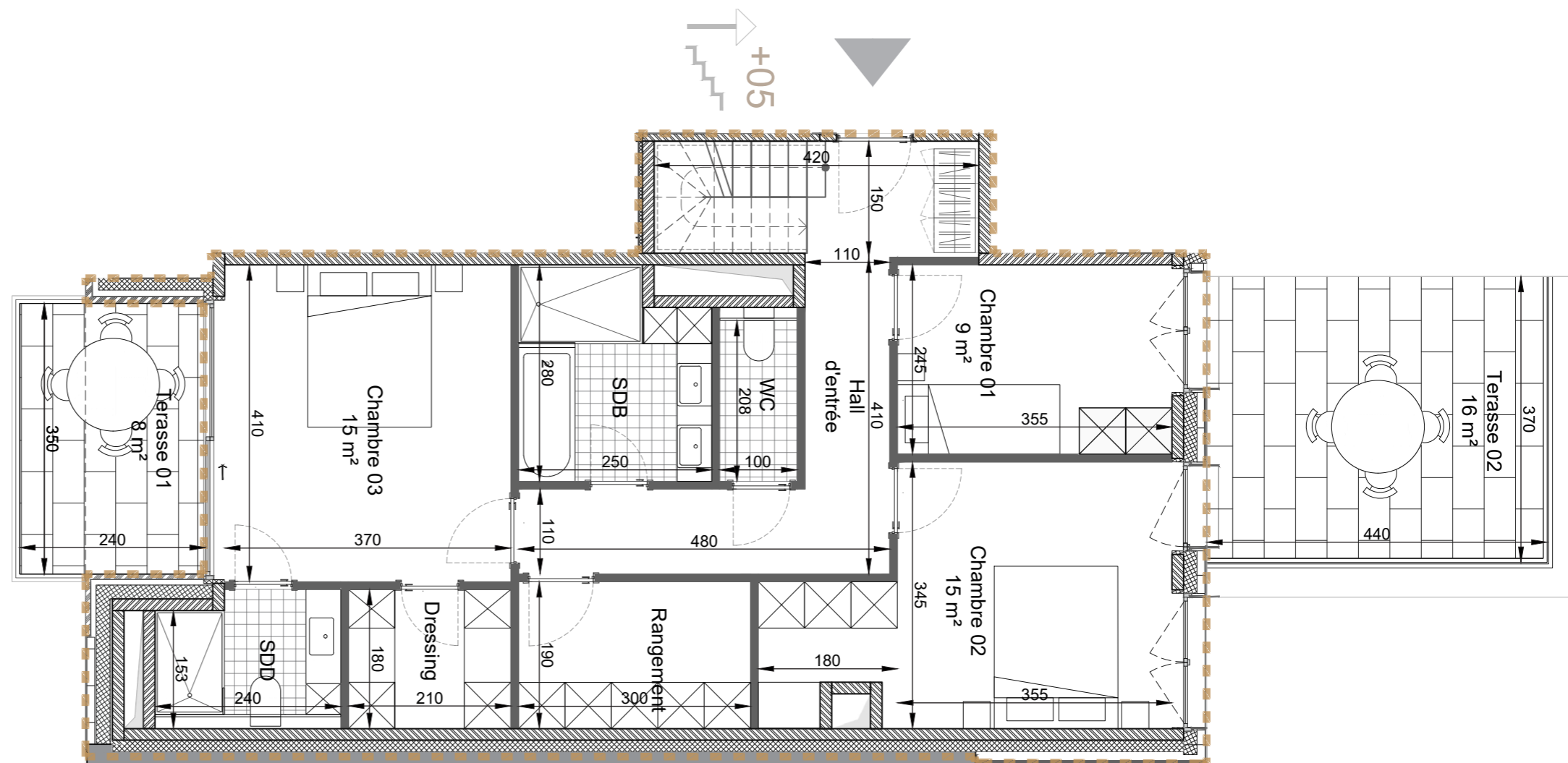
FLOOR +4  
Apartment 16

3 bedroom(s)

2 bathroom(s)

264 m<sup>2</sup> gross area

164 m<sup>2</sup> gross terrace area



The dimensions, surfaces, and kitchen and bathroom layouts are purely indicative. The provisions of the specifications take precedence over this sales plan. Indoor surfaces are net areas (LxW). Other surfaces are gross. All furniture and decoration are purely illustrative.



info@ardea.be  
www.ardea.be  
Steenweg op Leuven 1188, 1200 Sint-Lambrechts-Woluwe



PARMENTIER  
WOLUVE-SAINT-PIERRE

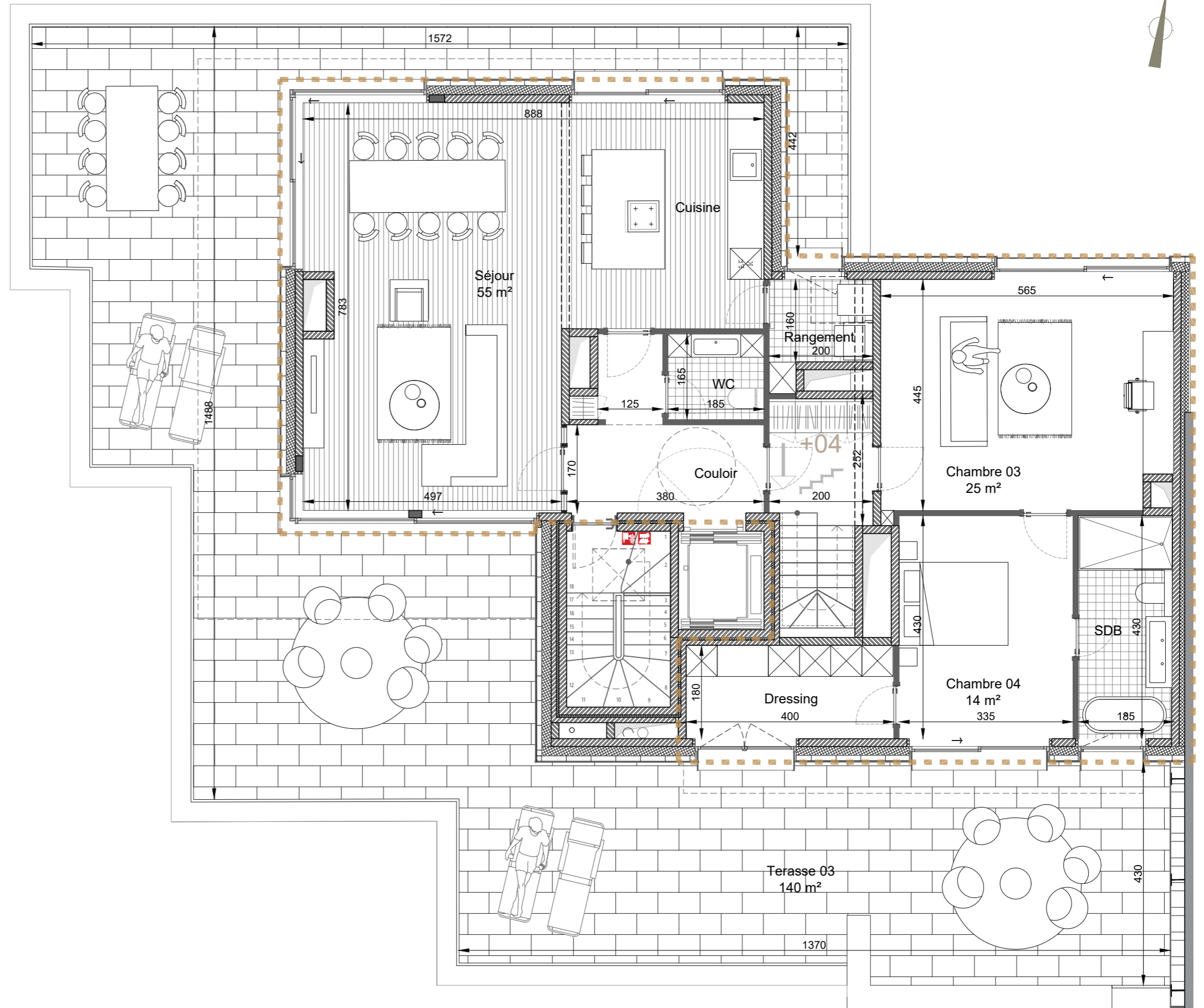
FLOOR +5  
Apartment 16 V1

5 bedroom(s)

3 bathroom(s)

264 m<sup>2</sup> gross area

164 m<sup>2</sup> gross terrace area



The dimensions, surfaces, and kitchen and bathroom layouts are purely indicative. The provisions of the specifications take precedence over this sales plan. Indoor surfaces are net areas (LxW). Other surfaces are gross. All furniture and decoration are purely illustrative.



info@ardea.be  
www.ardea.be  
Steenweg op Leuven 1188, 1200 Sint-Lambrechts-Woluwe



PARMENTIER  
WOLUVE-SAINT-PIERRE

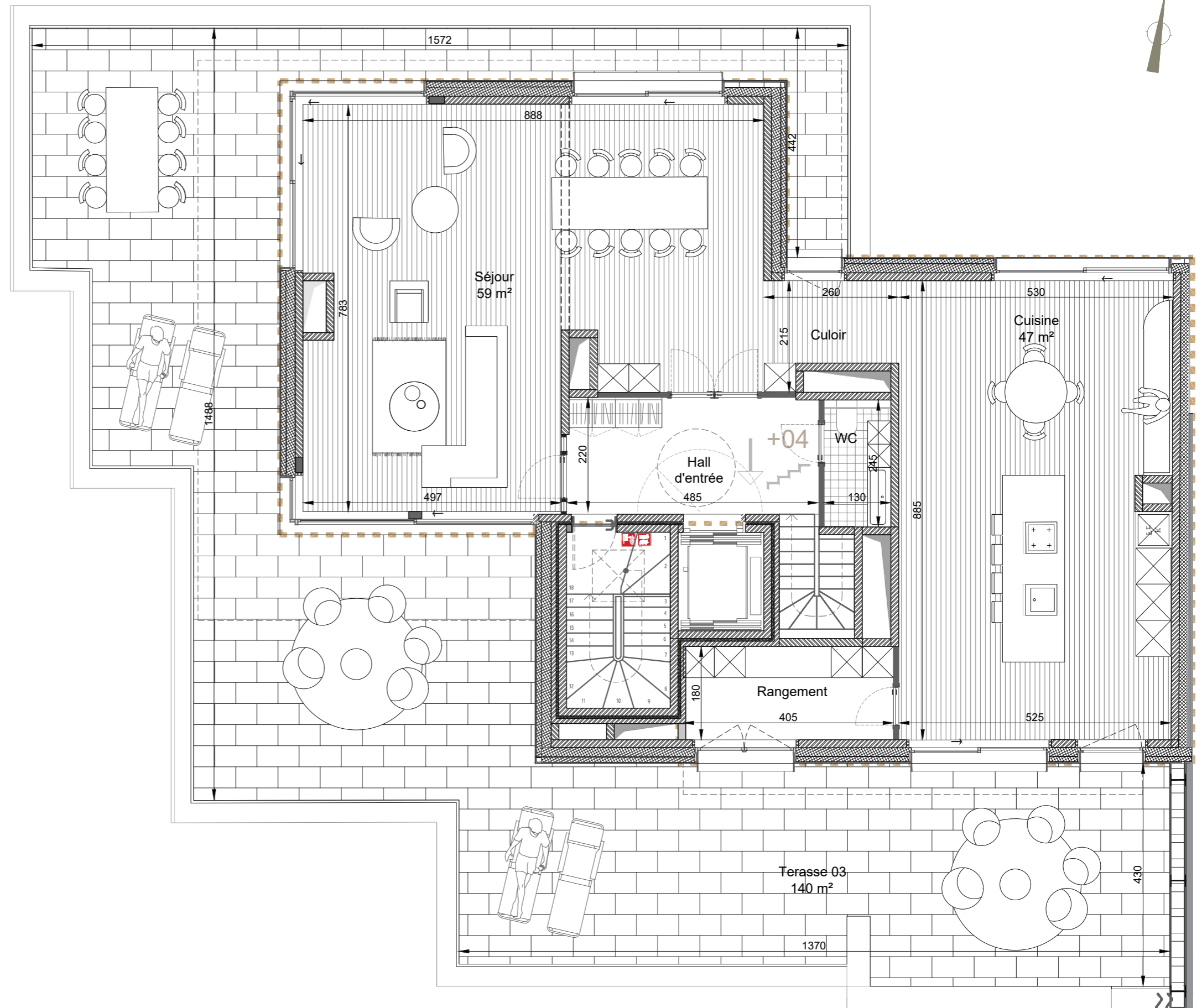
FLOOR +5  
Apartment 16 V2

3 bedroom(s)

2 bathroom(s)

264 m<sup>2</sup> gross area

164 m<sup>2</sup> gross terrace area



The dimensions, surfaces, and kitchen and bathroom layouts are purely indicative. The provisions of the specifications take precedence over this sales plan. Indoor surfaces are net areas (LxW). Other surfaces are gross. All furniture and decoration are purely illustrative.



info@ardea.be  
www.ardea.be  
Steenweg op Leuven 1188, 1200 Sint-Lambrechts-Woluwe